



Powered by
Microsoft

Architecting Azure Solutions

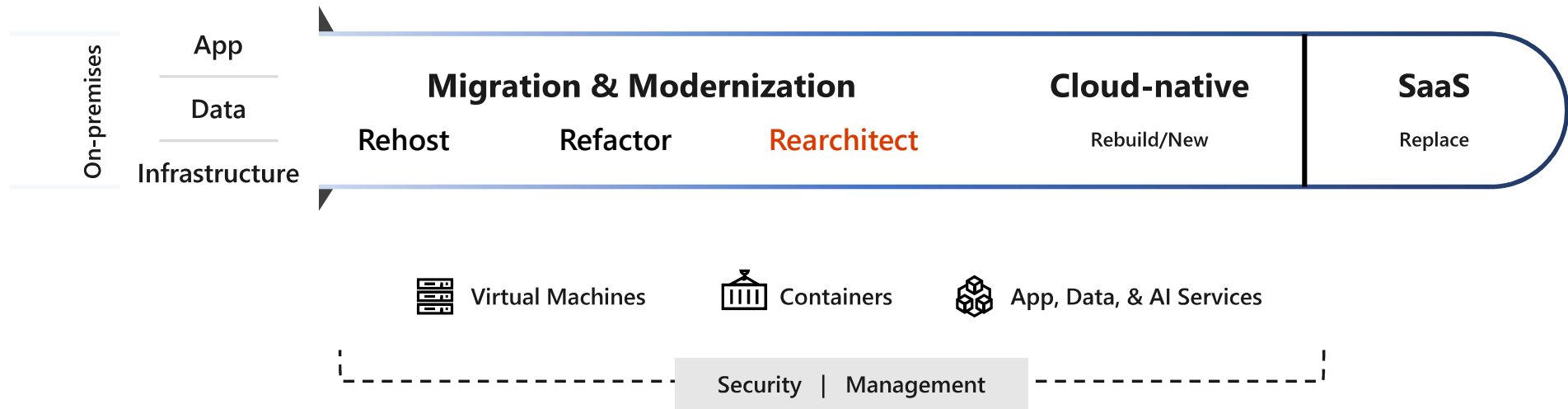
Marin Franković
Senior Solutions Architect, SPAN
mfrankovic@span.eu



Agenda

- Planing your journey to Azure
 - Toolbox
- Secure & Manage Workloads
- Optimize Migrated Resources
- Azure migration scenario guidance
- Foundational best practices
 - Set up migration Center of Excellence (CoE)
 - Plan migration strategies
 - Track migration scorecard
 - Best practices by phase
 - Govern Azure environments and resources
 - Extending Networking to Azure
 - Extending Identity to Azure
- Tips & Tricks

Planing your journey to Azure



Ground Zero : Know Your Tool Box

Goal is successful Azure migration: Pick the right tool for the job



Assess



Migrate



Optimize



Secure & Manage

Azure Migrate

Data Migration Assistant (DMA)

SQL Server Migration Assistant (SSMA)

Azure Site Recovery (ASR)

Azure Database Migration Service

Azure Data Box

Azure Cost Management

Azure Security & Management
(e.g., Blueprint, Security Center,
Backup, Monitor)

We embrace ISV solutions

 MOVE

 Cloudamize

 CloudAtlas®

 BitTitan

 appOrbit

 CHEF™

 STRATOZONE™

 turbonomic

 CloudEndure®

 Zerto

 Corent

 intigua

 stiim™

 ATTUNITY

 DATOMETRY

 MORPHIS

 Ispirer

 Informatica

 QuerySurge

Secure & Manage Workloads

Built-in, intelligent services for Azure and on-premises workloads



NEW

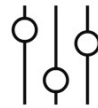
Governance

Proactively apply policies and optimize cloud spend



Security

Industry leading Security with Advanced Threat Protection



Monitoring

Deep operational insights with rich intelligence



Resiliency

High availability and protection for VMs, apps and data



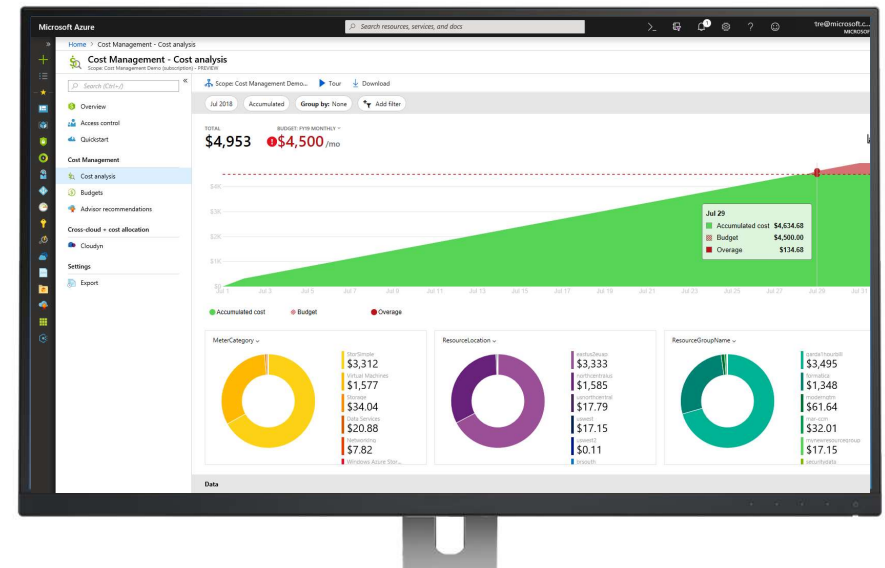
Automate

Powerful scripting, configuration and update management

Turn on security, backup, and monitoring for every migrated VM

Optimize Migrated Resources

- Azure Cost Management: Unified experience to optimize cloud spends, built-in best practice recommendations
- Use Azure Hybrid Benefit and Azure Reserved Instances during or after migration
- Modernize for longer term value



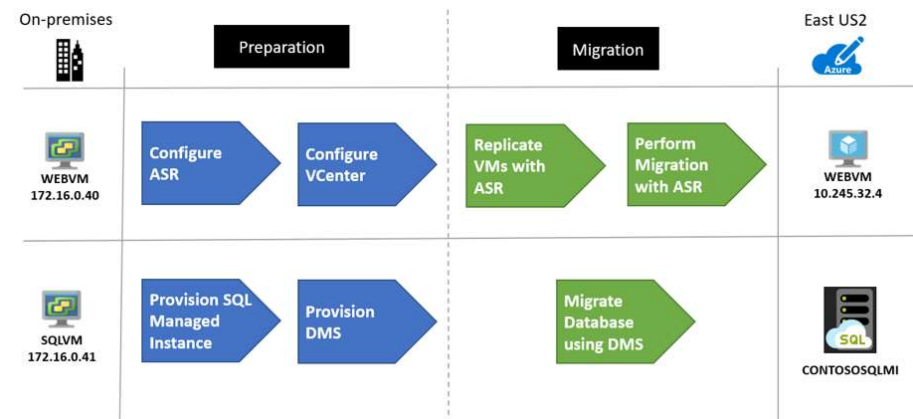
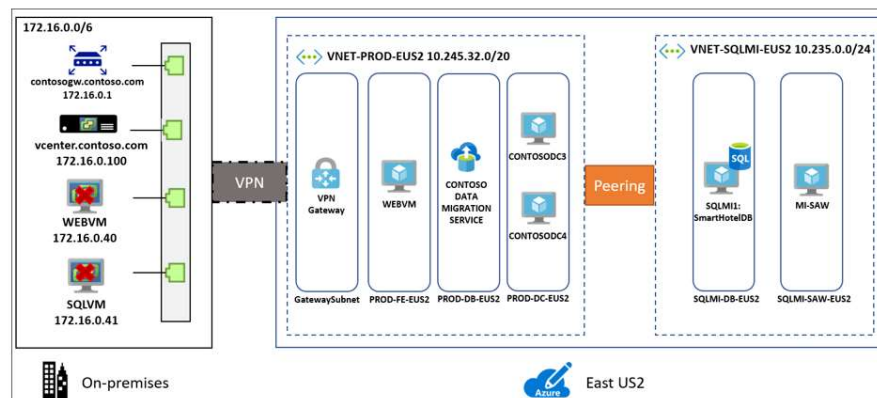
Azure migration scenario guidance

Fourteen detailed scenario guides on the Azure migration experience (using Contoso, a fictitious company)

Azure Subscriptions, Network, Azure AD & Standards (AzureSetup.exe)

POC walkthrough of Windows Server/SQL Server and LAMP Apps

Business Drivers, Migration Goals & Technical Walkthroughs



<http://aka.ms/contoso-migration>

Foundational best practices



People

- Drive org culture change
- Set up migration center of excellence (CoE)
- Ensure right stakeholders are engaged
- Provide learning paths & certifications
- Use skilled migration partners



Planning & process

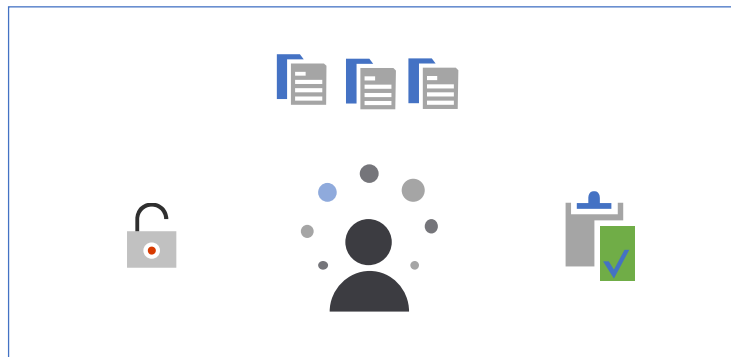
- Build biz case w/ exec sponsorship
- Plan migration strategies
- Start small: Do a pilot
- Track migration scorecard
- Track and optimize cloud spends



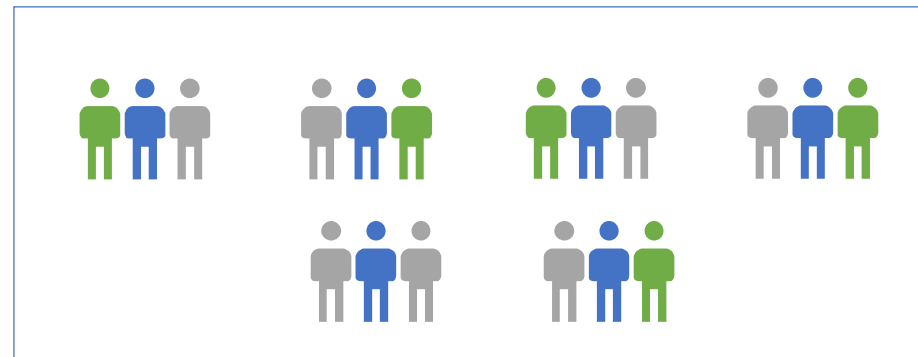
Technology

- Choose the right tools for the job
- Govern Azure environments & resources
- Extend networking/identity to Azure
- Establish robust security foundation
- Use integrated security/management tools

Set up migration Center of Excellence (CoE)

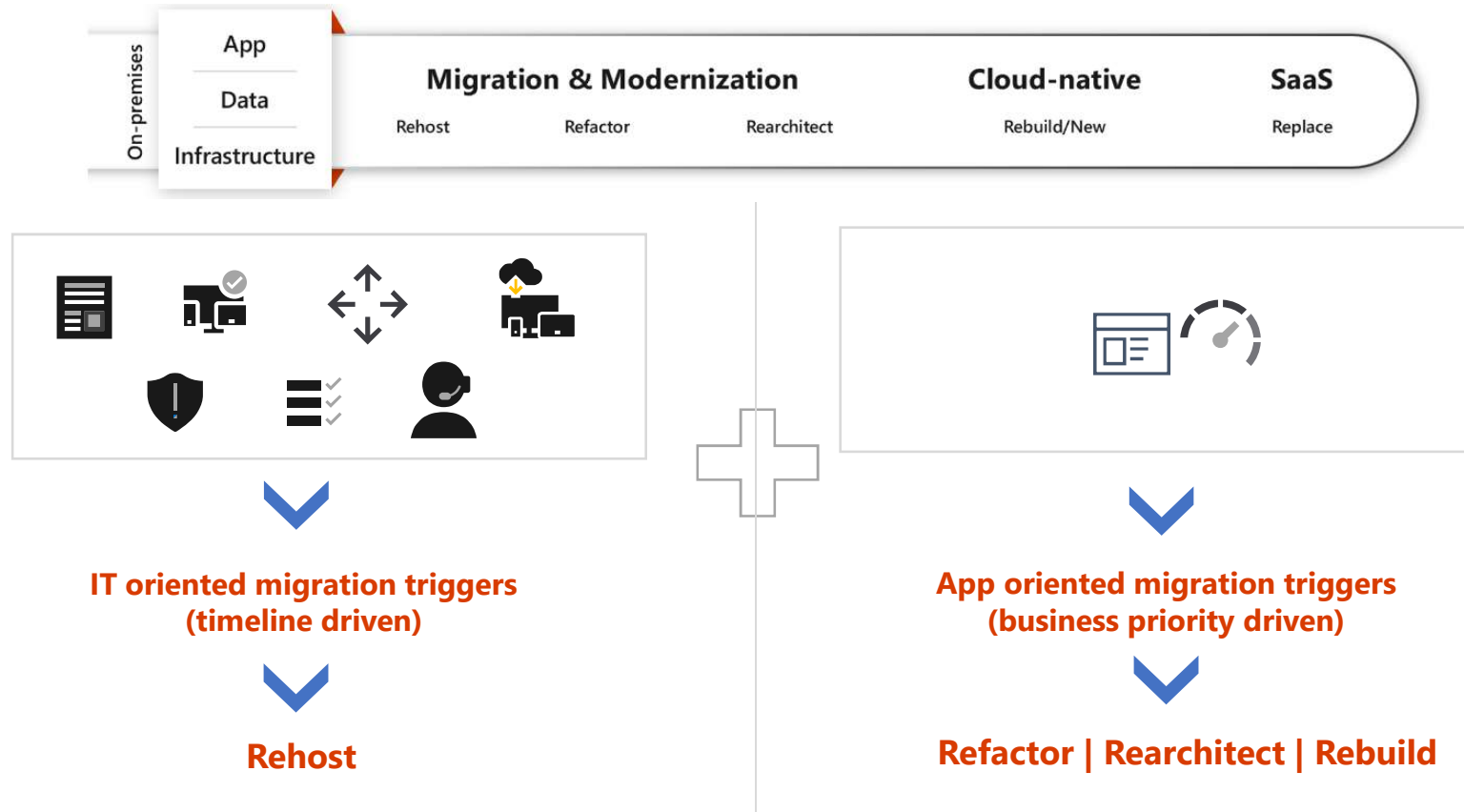


CoE: App portfolio evaluation, program management office, shared services (e.g., networking, security, governance)



Migration teams: Organized by LOB (sales, marketing, HR, finance etc.), migration strategy (rehost, refactor etc.), or workload (Windows, Linux, etc.)

Plan migration strategies



Start with migration pilot: Pick lower complexity, less risky workloads

Track migration scorecard

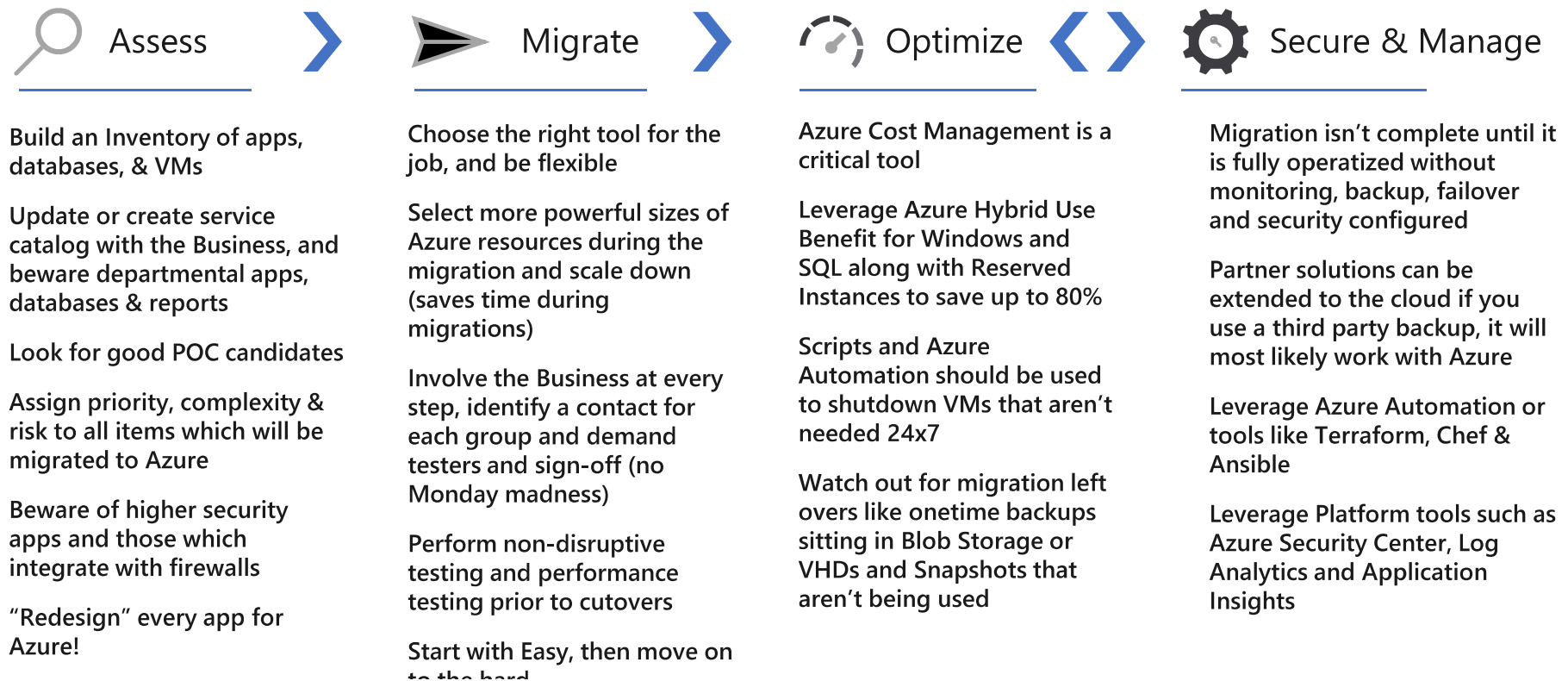
By phase

By migration strategy

LoB	Discovered	Assessed	Migrated	Rehost	Refactor	Rearchitect	Rebuild	Replace
Sales	122	80	15	7	4	1		3
Marketing	42	25	5	3				2
HR	50	40	25	15		2		8
Finance	40	25	13	10				3

Best practices by phase

Learnings from at-scale Azure migrations



Govern Azure environments and resources

Governance is key as you embark on large scale migration

- Standardize on Azure environments as you plan migration

 - Maintain velocity with needed control
 - Avoid resource and subscription sprawl

- Add several environments with single click deployments as you scale migration

- Deploy compliant environments using built in templates for greater migration velocity (e.g., FedRamp, GDPR)



Azure Blueprint

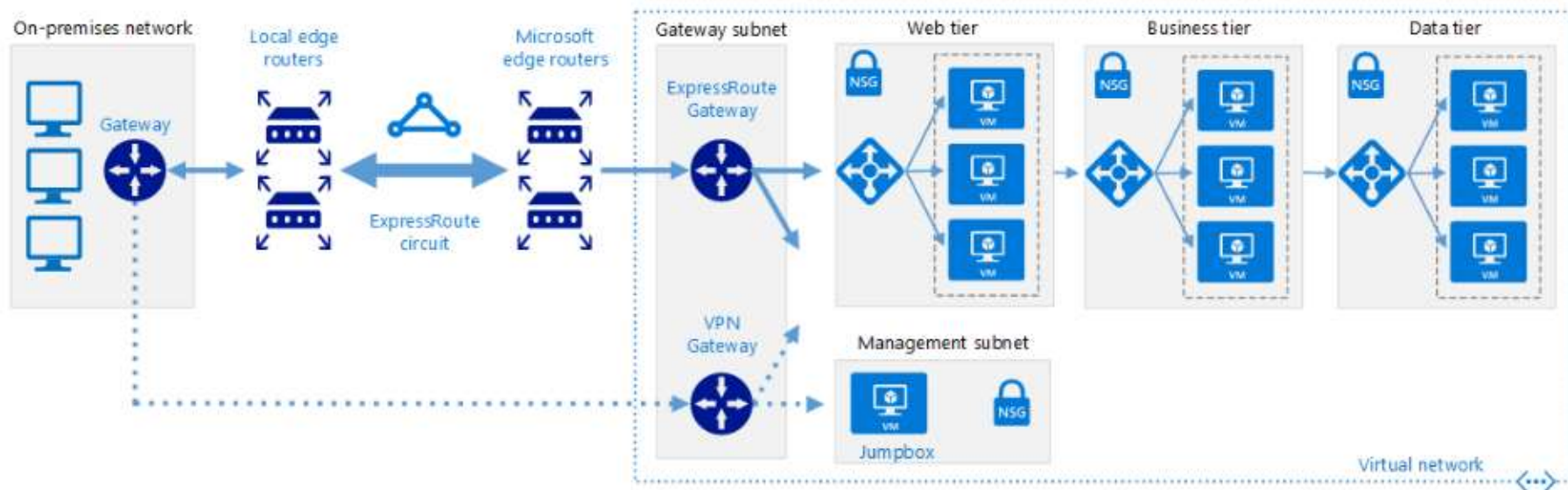
Subscriptions | Resources | Policies | RBAC

Extending Networking to Azure

Create a Hybrid Network using ExpressRoute with VPN failover

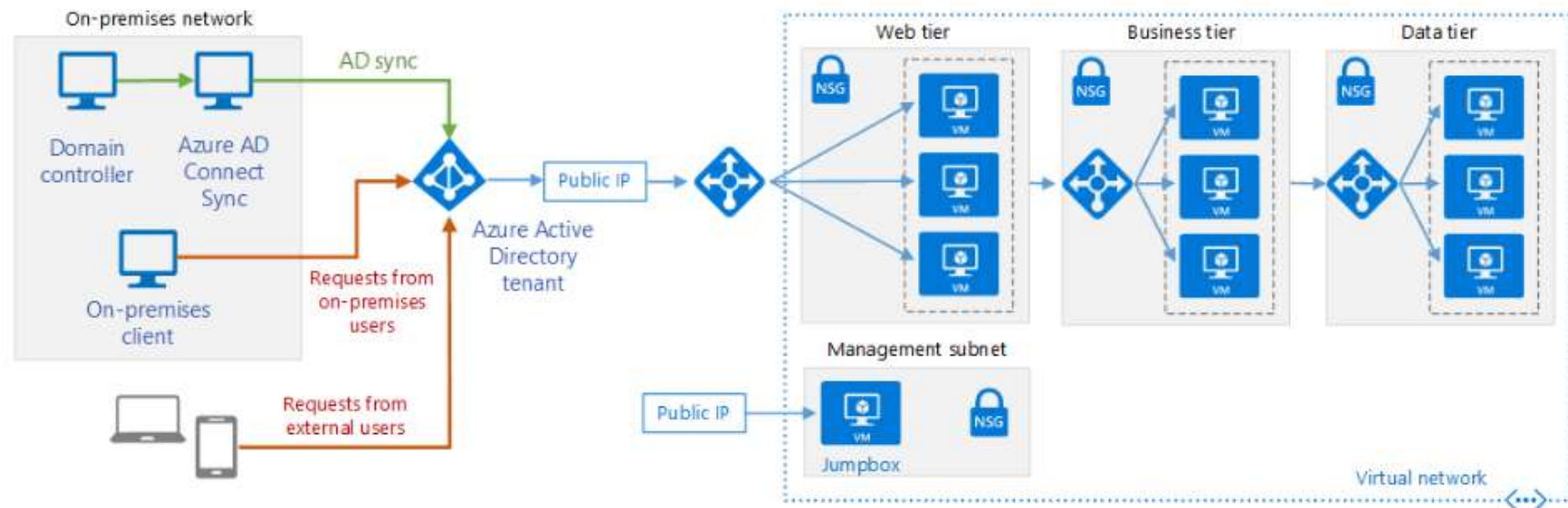
Leverage Partner solutions for firewalls and routers to deploy DMZ

Public and private IP traffic crosses ER circuit, but private only via VPN



Extending Identity to Azure

Synchronize on-premises AD with Azure AD using AD Connect
Provides single sign on access to migrated apps and Internet SaaS apps
Other implementations possible including ADFS



For low latency access to hybrid apps: Extend on-premises AD to Azure IaaS, purpose built connectivity

Tips & Tricks

What region to choose?

Region closest to HQ

Speed test <http://www.azure.speed.com/>

Multi region

Dependent on customer locale and workload

Migration and DR

Targets in different regions



Cost Evaluation

- Create multiple Assessments based on workload
 - Region pricing
 - Reserved instance pricing
 - As on-premises or Performance-based history
 - Include or Exclude VM series
 - VM uptime
 - Azure Hybrid Benefit
- TCO - <https://azure.com/tco>

Build the Infrastructure

Create a Vnet /16 CIDR

Subnets /24 CIDR

Network security group

ACL on subnet and/or Network Interface

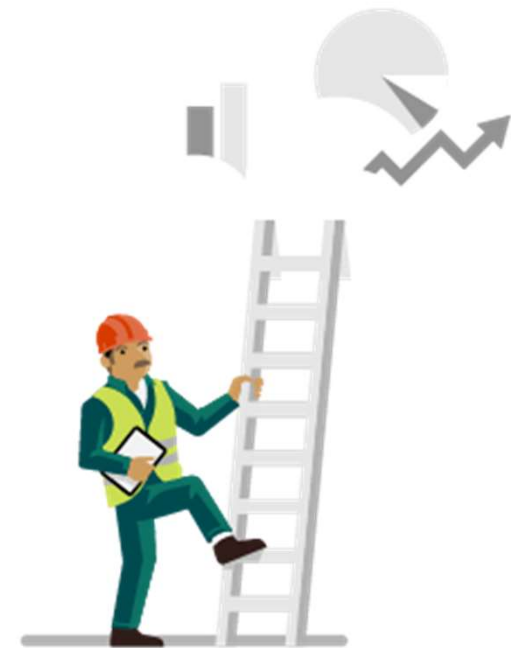
S2S vpn and/or express route

Ikev2, route or policy based

Many 3rd party options, need Route Table

Domain Controller

Azure AD Connect



PoC / TestDev

Sandbox

Build and destroy when done

Learn a new skillset

ARM Template, disk image creation, Desired State

ASR for Proof of Concept

Disaster Recovery and Failback

Commit workload to Azure

Don't reinvent the wheel

GitHub Templates

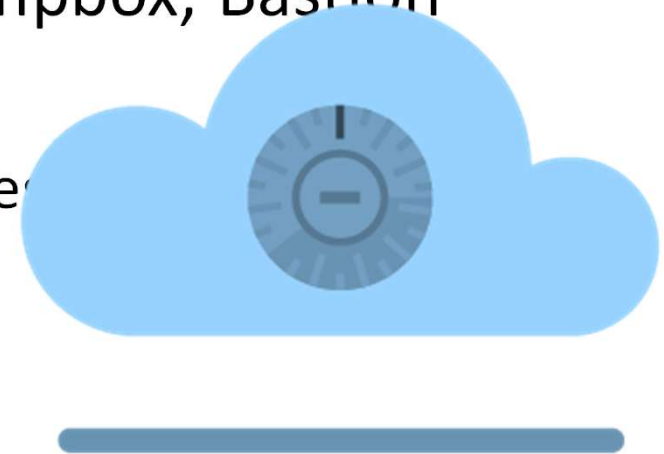
Azure QuickStart Templates

Template deployment from Azure portal



Build Defense

- Remove external IP
- Utilize internal IP through VPN, Jumpbox, Bastion
- RBAC – role-based access control
 - Management groups and custom roles
- Policy
- MFA
- Security Center
 - Application whitelisting
 - Just in time Access

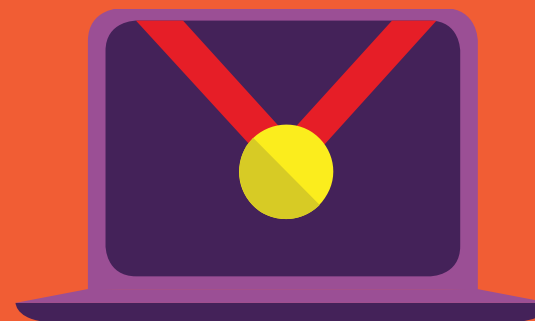


Keep in mind

- Backup and DR is still needed
 - 1st party or 3rd party
- Recovery Services Vault- create first to specify LRS or GRS
- HA
 - Availability sets, Availability Zones
 - Scale Horizontal or Vertical
 - Managed disk Premium Disks – SSD

Ocenite predavanje kako bismo
izabrali najboljeg predavača na
Sinergiji 18!

Popunite konferencijsku anketu i
učestvujte u velikoj nagradnoj igri!



Thank you

Marin Franković
Senior Solutions Architect, SPAN
mfrankovic@span.eu

Powered by
Microsoft